

COTSWOLD BARN

Kitchen/Dining Room

The walls are Papers and Paints SC487 Intelligent Matt.

The woodwork is Papers and Paints SC487 Oil Eggshell.



Living Room/Dining Room

The walls are Paper and Paints 10A Acrylic Matt.

The woodwork is Papers and Paints 10A Oil Eggshell.



Family Room

The walls are Paper and Paints 10B Acrylic Matt.

The woodwork is Papers and Paints 10A Oil eggshell.

The Cupboards either side of fireplace are Papers and Paints 10B Oil Eggshell.



Main entrance/Hallway/Stairs

The walls are Paper and Paints, 10D Intelligent Matt.

The skirting, treads and banister posts are Paper and Paints 10A Oil Eggshell.



Bedrooms

This bedroom may NOT be decorated unless agreed with the owner.



Spare Bedroom

Walls are Paper and Paints SC487 Intelligent Matt.

Woodwork is Paper and Paints SC487 Oil Eggshell.

The Sloping Ceiling is Paper and Paints ½ strength SC487 (PP19-8-11PBF) Acrylic Matt.

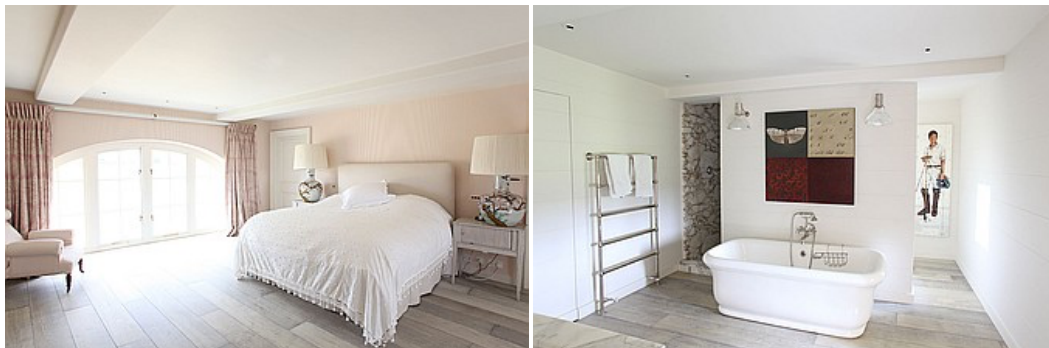


Master Bedroom

Walls are Paper and Paints SC487 Intelligent Matt.

Wallpaper Ian Mankin Pink Stripe Ticking.

Doors/Skirting Paper and Paints SC487 Eggshell.



Twin bedroom in Eaves

Walls are Paper and Paints 10A Intelligent Matt.

Woodwork Paper and Paints 10A Eggshell.



Utility Room

Walls are Paper and Paints 3A Intelligent Matt.

Woodwork Paper and Paints ½ strength 3A (PP19-8-11PBD) Oil Eggshell.



Play Barn by swimming pool

The walls are Paper and Paints ½ strength SC487 (PP19-8-11PBF).



Any queries do contact Light Locations info@lightlocations.co.uk

Information correct as of November 2020.